

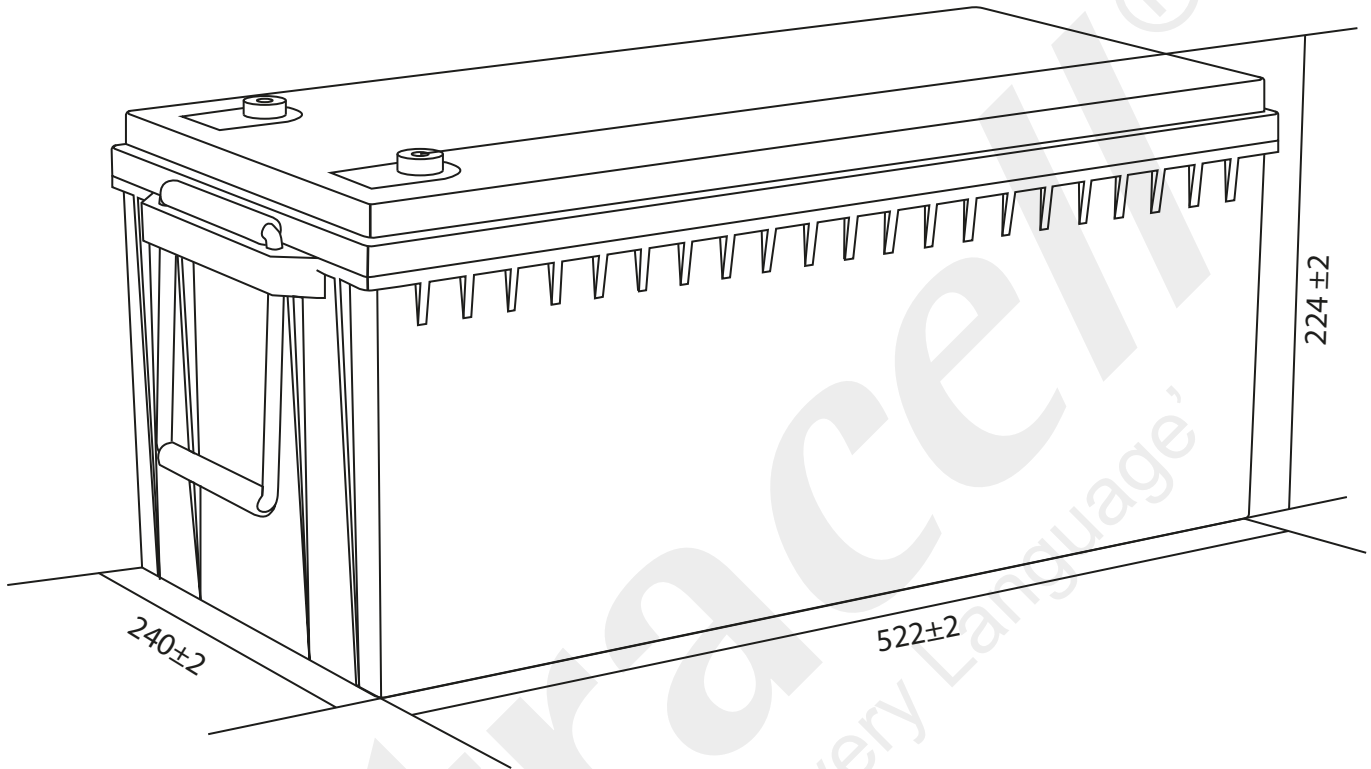
Ultracell[®]

'Quality in Every Language'

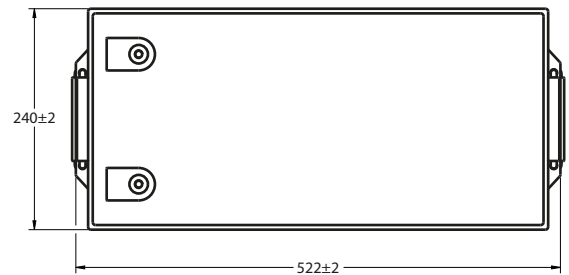
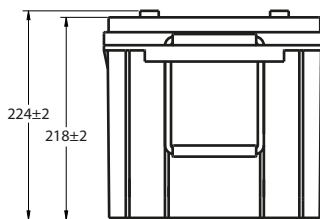
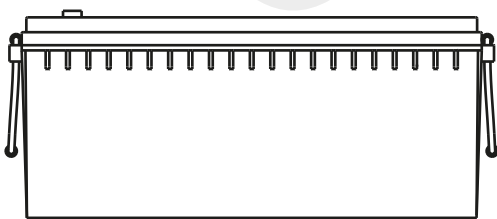
LIT200-12

12V 200Ah

Lithium Series



Technical Dimensions (mm)

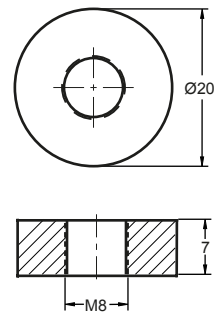


Image



Terminal Dimensions (mm)

Standard Terminal: F11



Technical Specification

Electrical Characteristics	Nominal Voltage	12.8V
	Nominal Capacity	200 Ah
	Energy	2560Wh
	Internal Resistance (AC)	≤ 20m Ω
	Cycle Life	> 2000 cycles @ 0.5C 100% DOD
	Months Self Discharge	< 3%
	Efficiency of Charge	100% @ 0.5C
	Efficiency of Discharge	96 ~ 99% @ 0.5C
Standard Charge	Charge Voltage	14.6 ± 0.2V
	Charge Mode	0.2C to 14.6V, then 14.6V, charge current to 0.02C (CC/CV)
	Charge Current	60A
	Max. Charge Current	120A
	Charge Cut-off Voltage	14.6V ± 0.2V
Standard Discharge	Continuous Current	120A
	Max. Pulse Current	140A (<3s)
	Discharge Cut-off Voltage	8V
Environmental Information	Charge Temperature	0 ~ 55°C @ 60 ± 25% Relative Humidity
	Discharge Temperature	-20 ~ 60°C @ 60 ± 25% Relative Humidity
	Storage Temperature	-20 ~ 45°C @ 60 ± 25% Relative Humidity
	IP Class	IP65
Mechanical Information	Container Material	ABS
	Flame Retardant Option (FR)	ABS (UL94:VO)
	Terminal	F11
Design Life	15 Years	
Battery Management System	Complete with BMS unit measuring current, voltage, single cell surface temperature and the ambient temperature of the battery.	

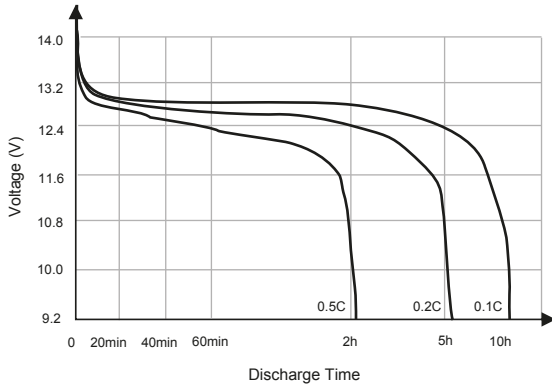
Self Discharge

Ultracell® LIT batteries may be stored for up to 2 years at 25°C and then a refresh charge is required. For higher temperatures the time intervals will be shorter.

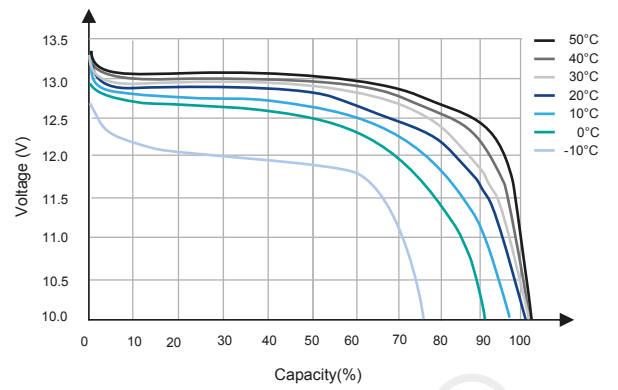




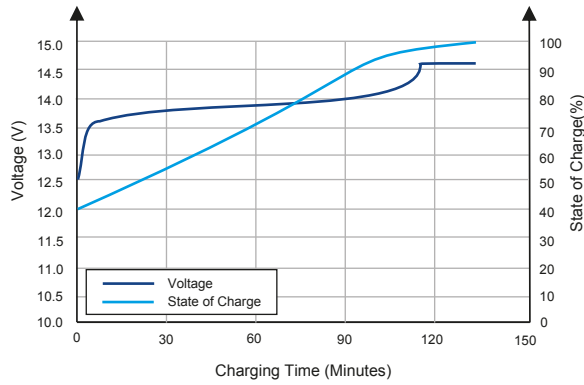
Different Rate Discharge Curve (25°C)



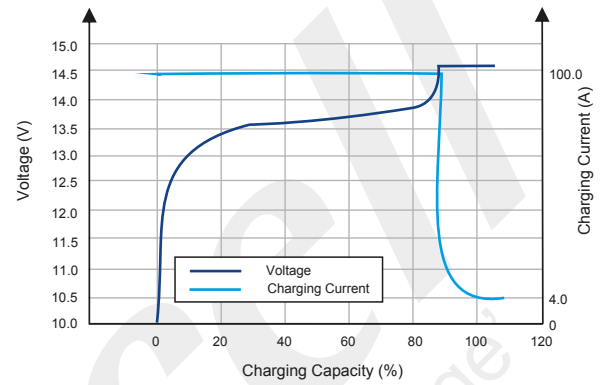
Different Temperature Discharge Curve (0.5C)



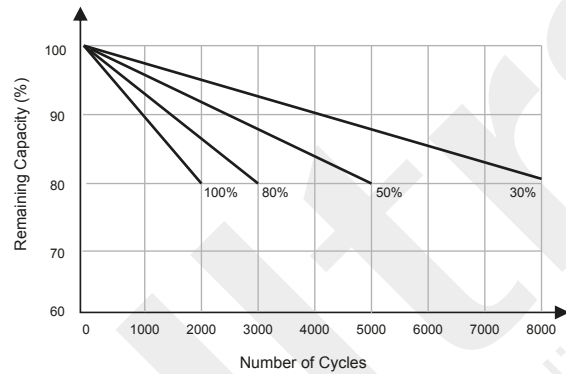
State of Charge Curve (0.5C, 25°C)



Charging Characteristics (0.5C, 25°C)



Cycle Life on D.O.D (25°C)



Temperature on Self Discharge Curve

